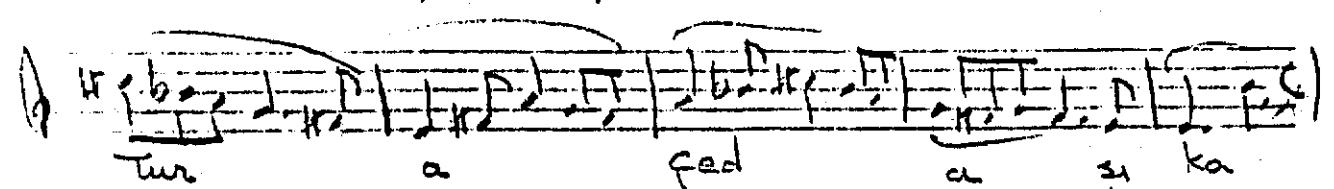
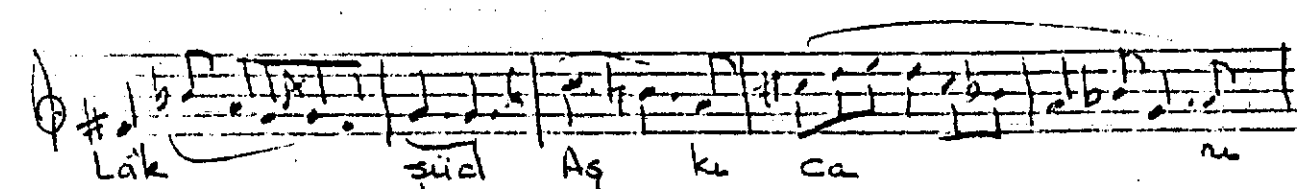
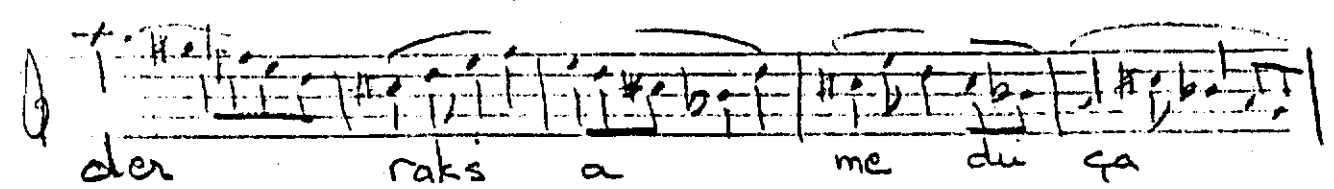
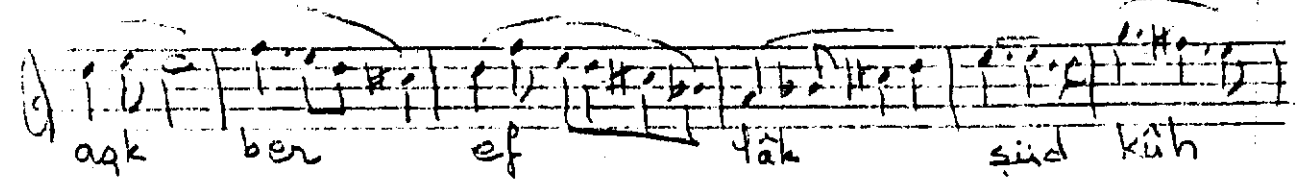
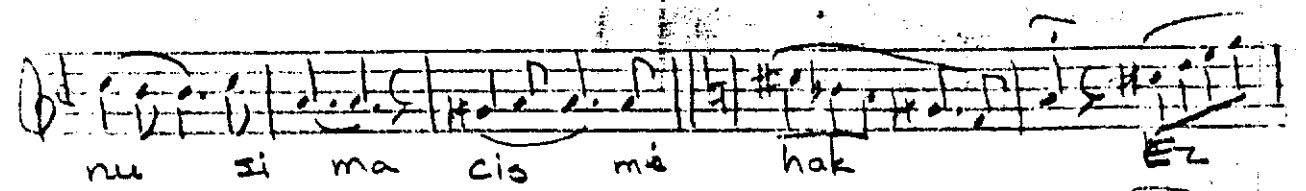
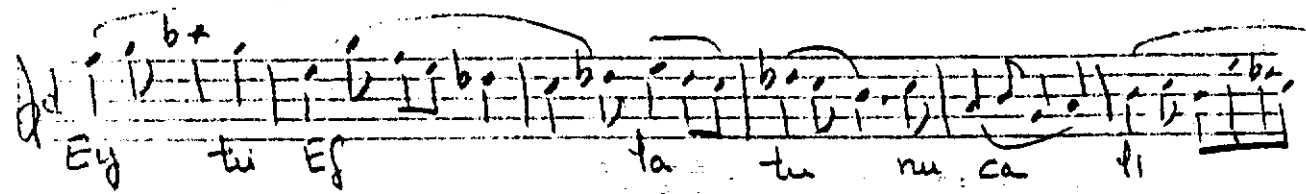
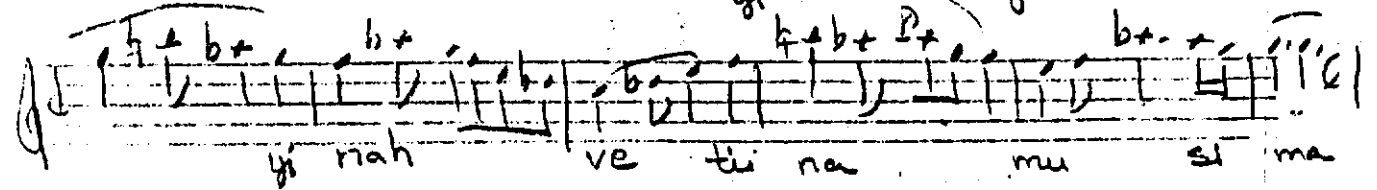
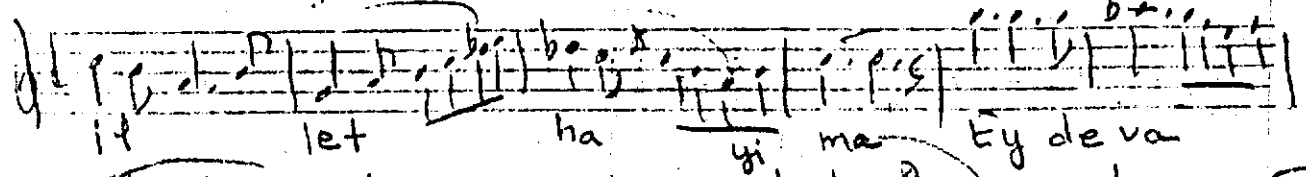
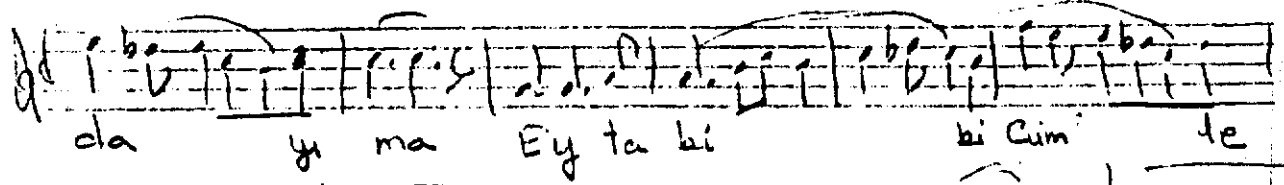
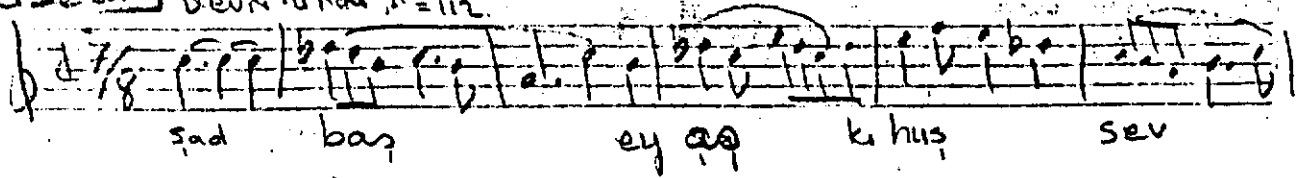
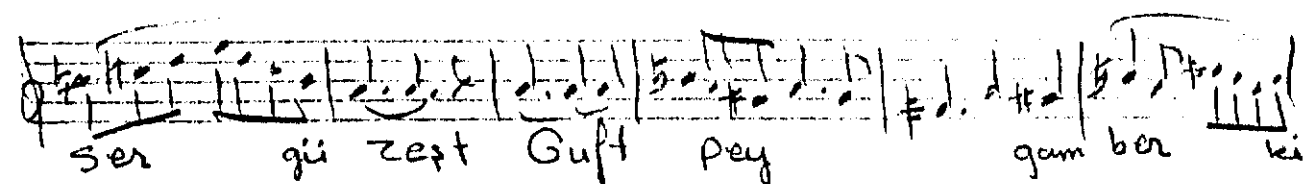
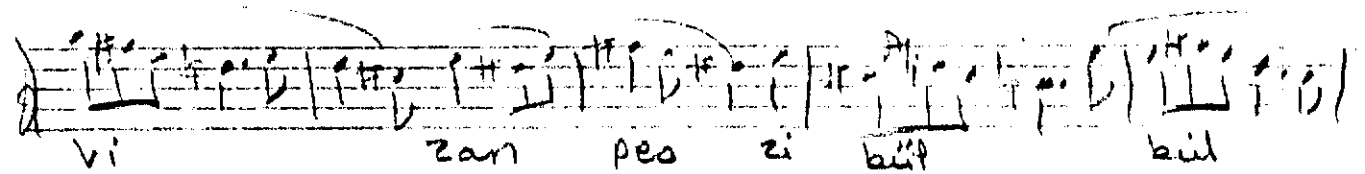
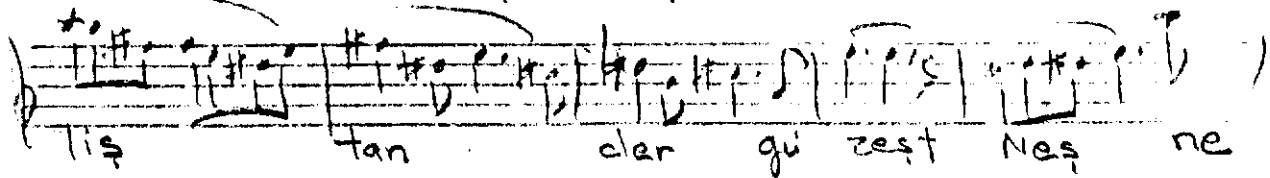
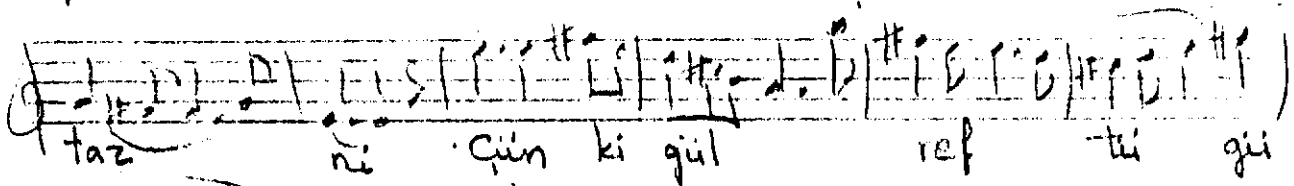
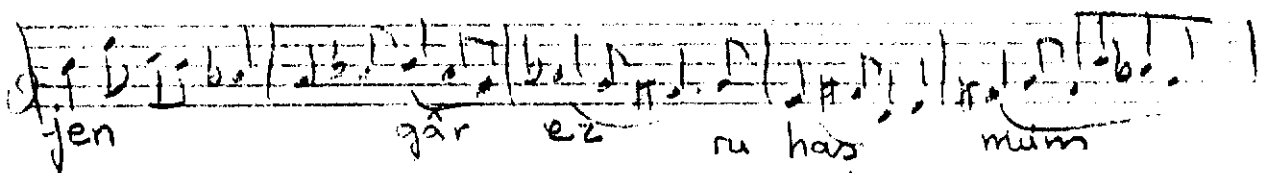
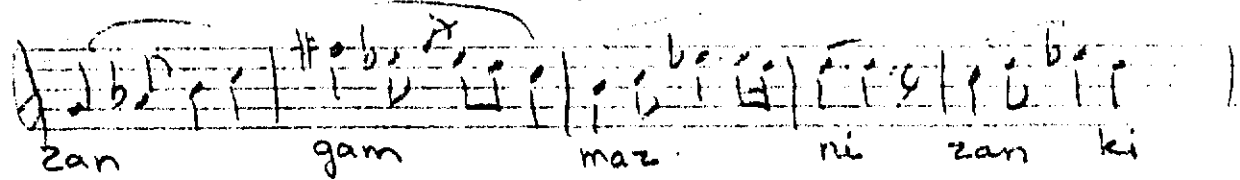
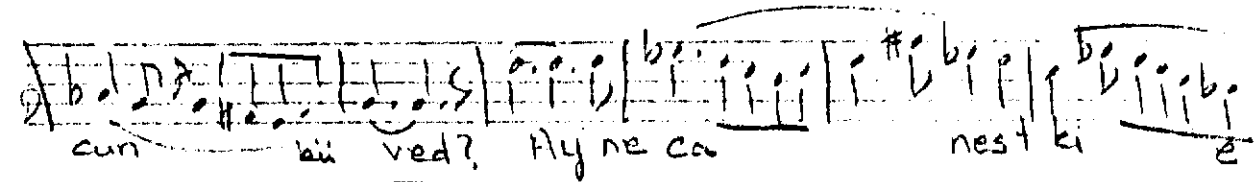
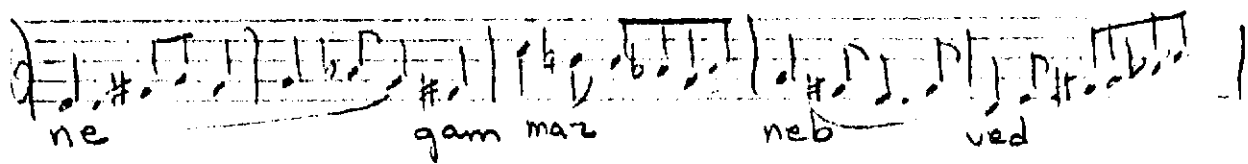
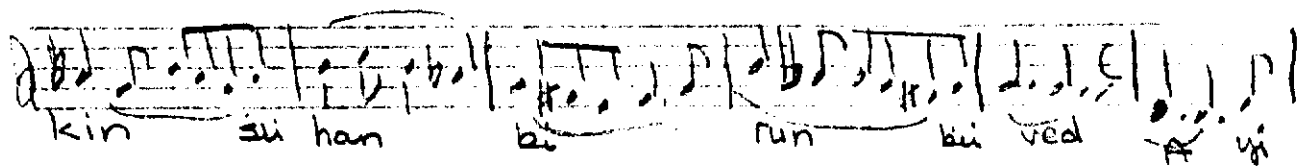
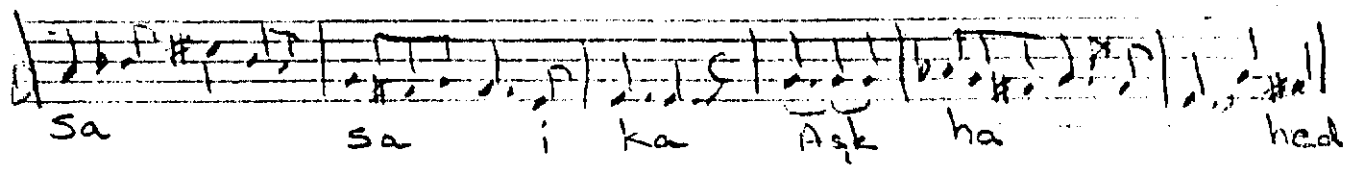
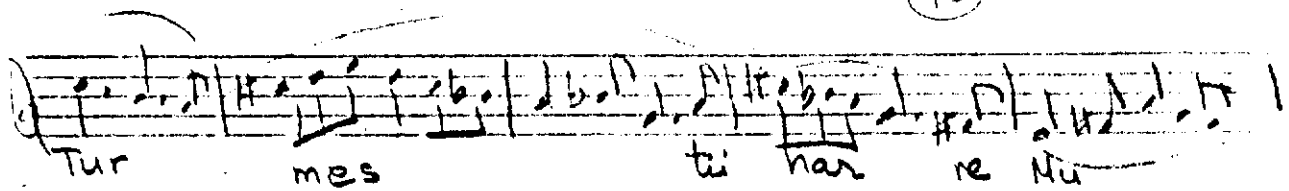
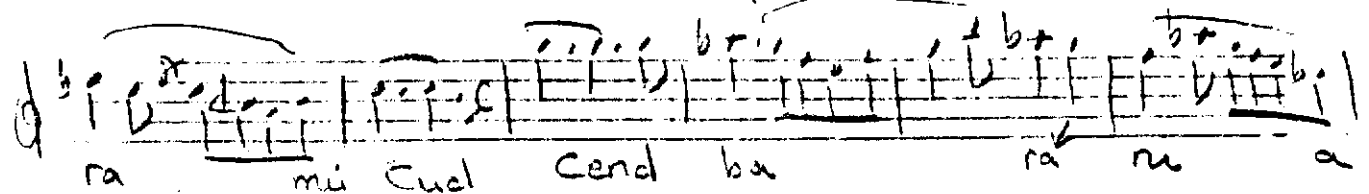
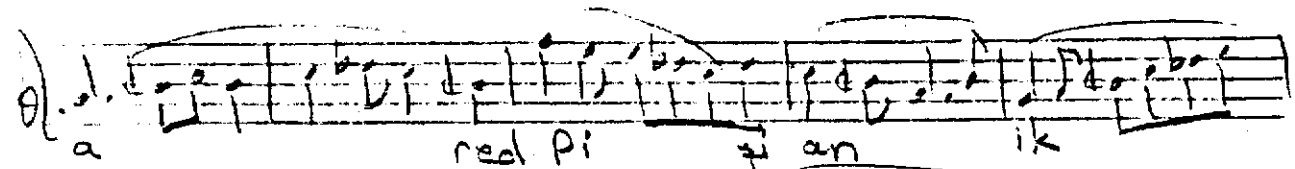
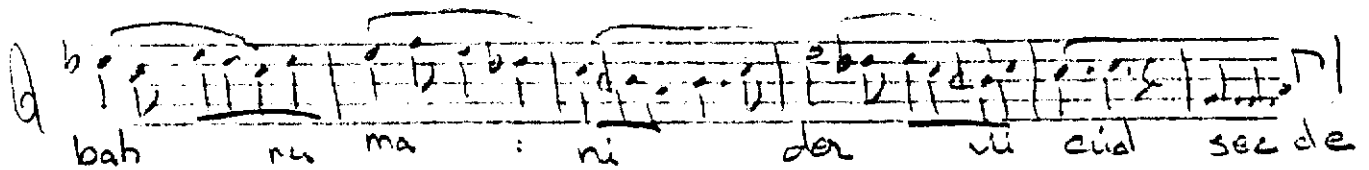
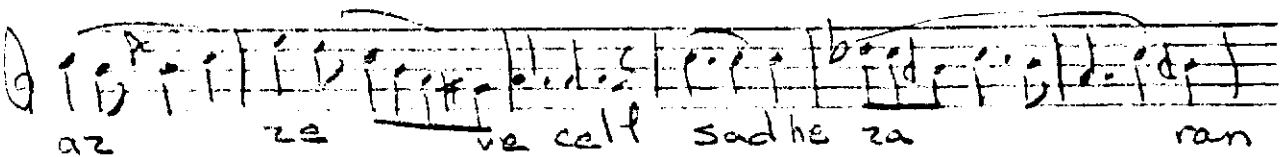
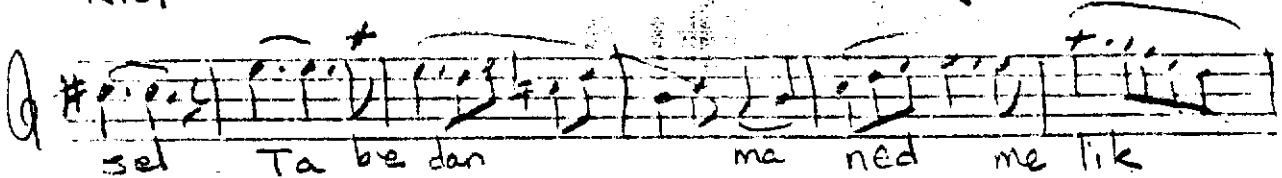
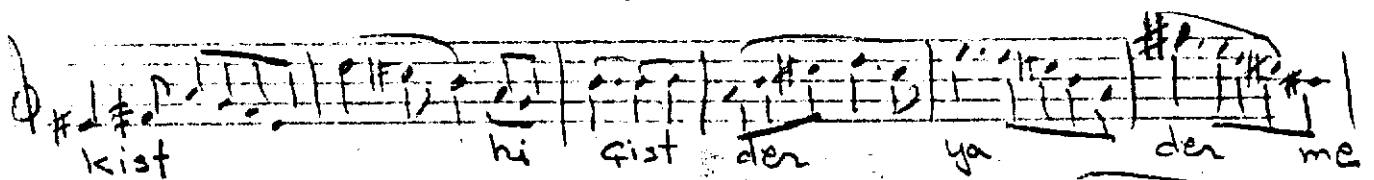
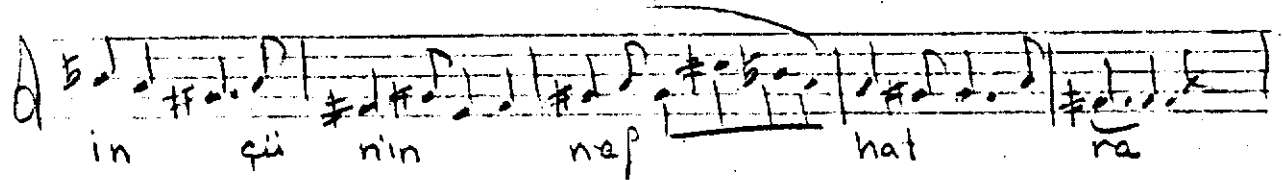
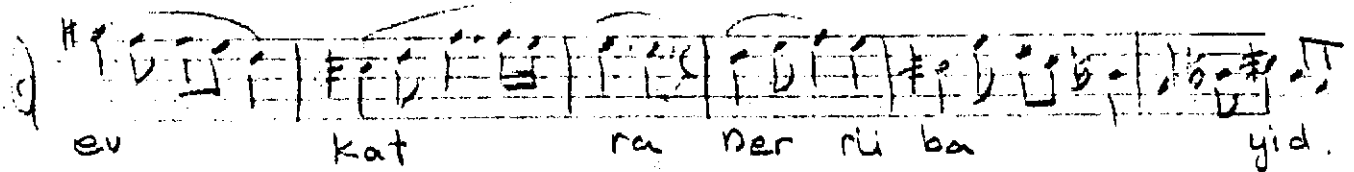
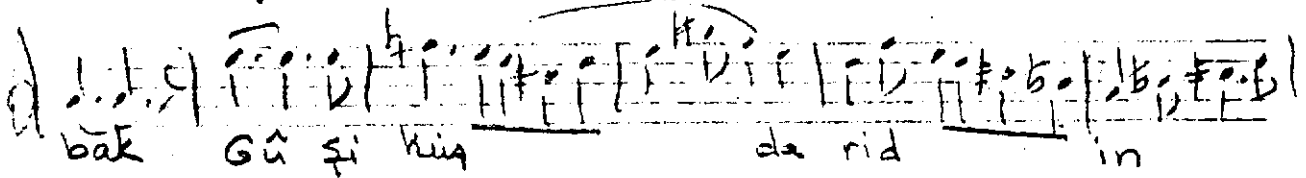
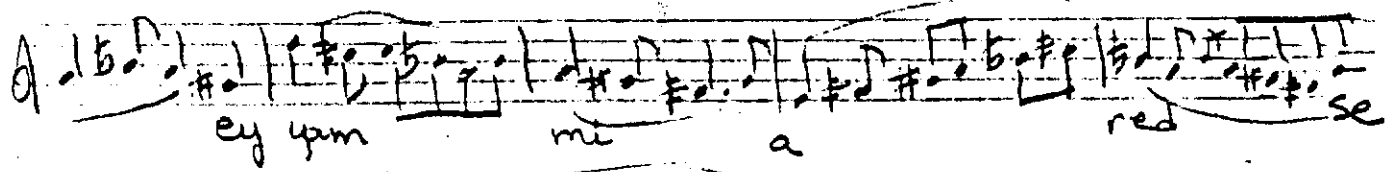
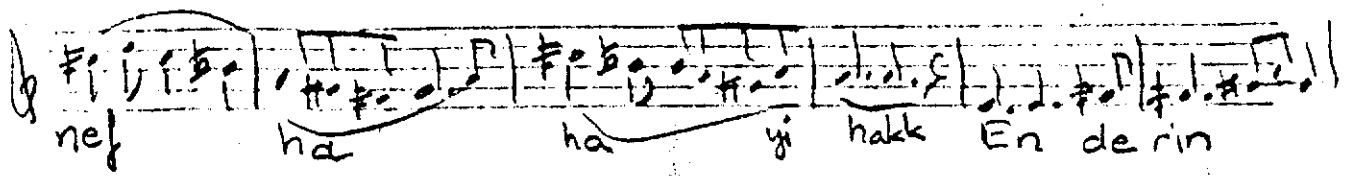
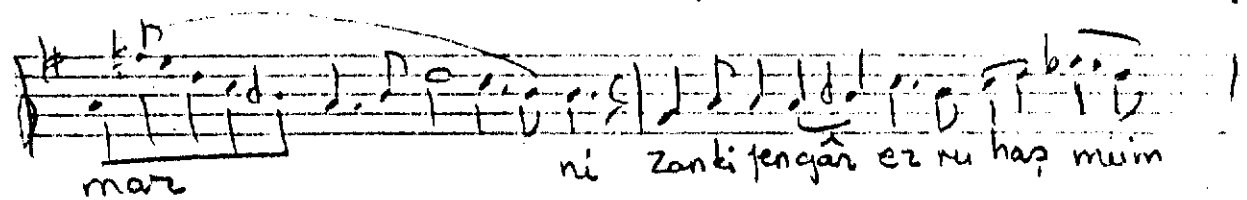
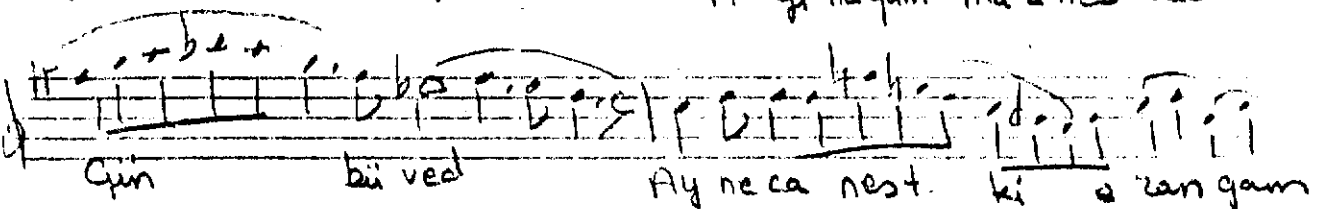
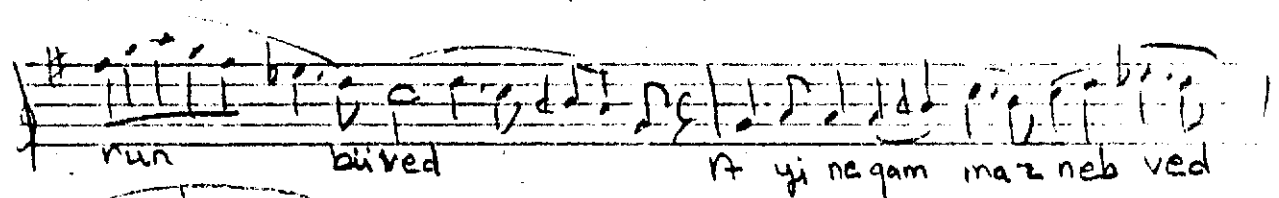
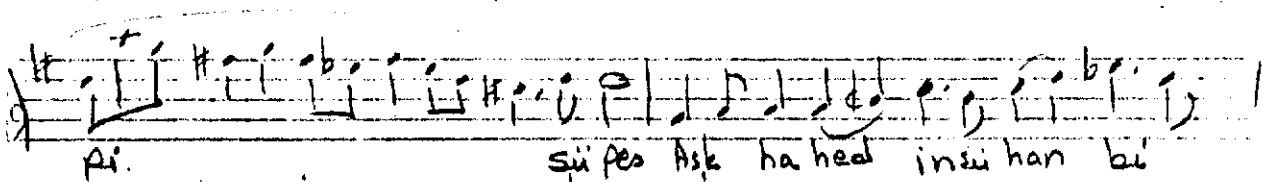
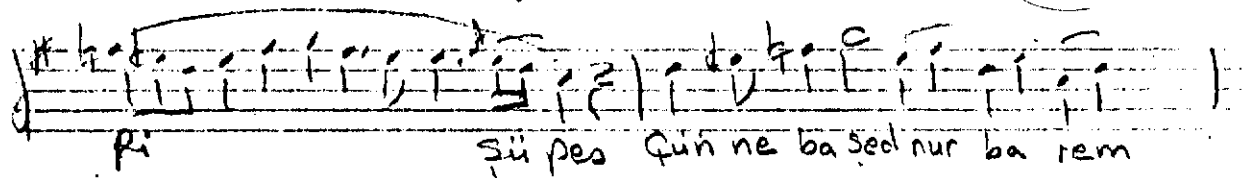
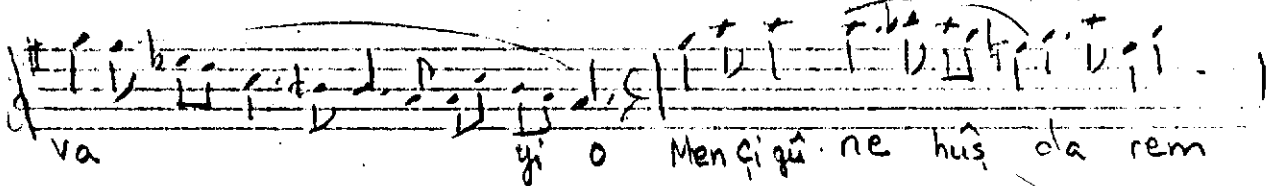
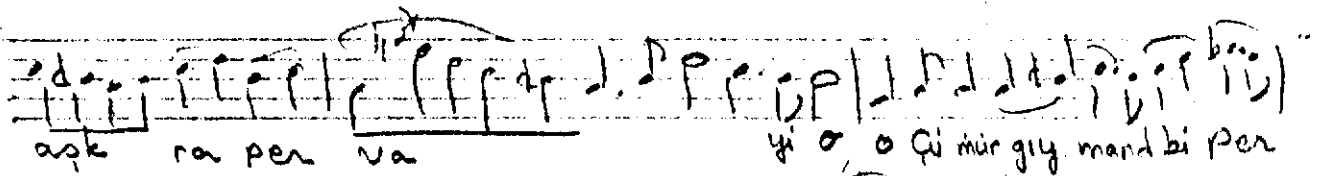
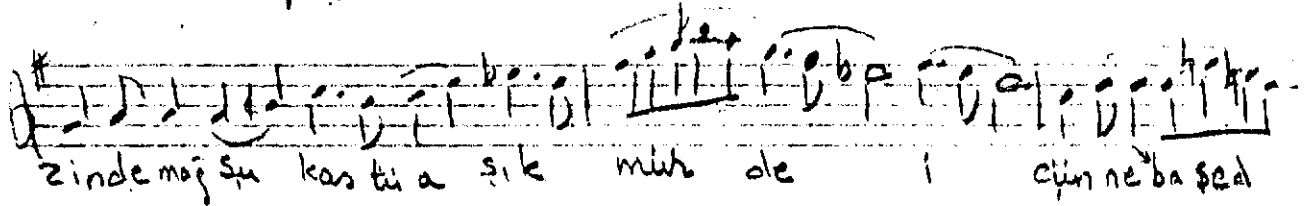
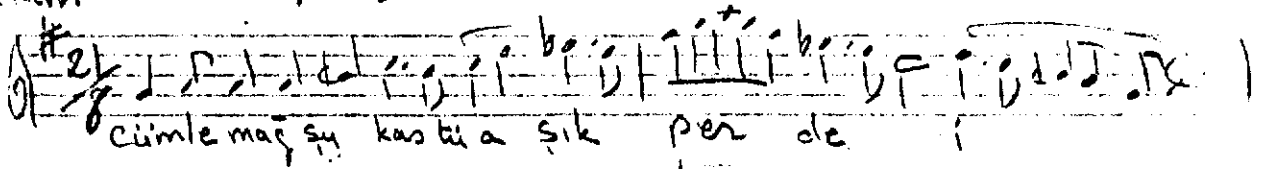
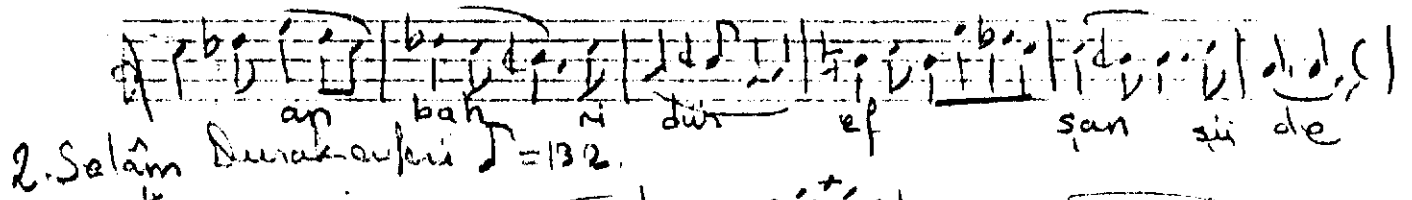
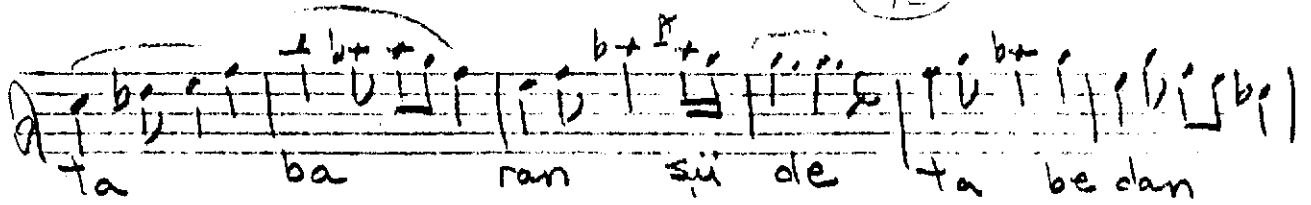


Birinci Selâm Devrihîndî **SABA.** op 67.









3. Selâm Devrikân (d=92)

Si min ze ka na senkdi la ta le i ra

ra Hoş kun beni gâ hi di li gam

per ver ma ra ma ra An ka ti bi

fer su de ger ez kü yü tü olu rest el kal

kü a la ba bike tay len ve ne ha ra

ha ra

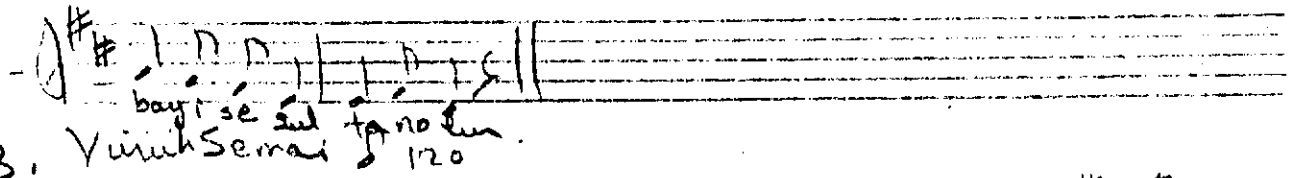
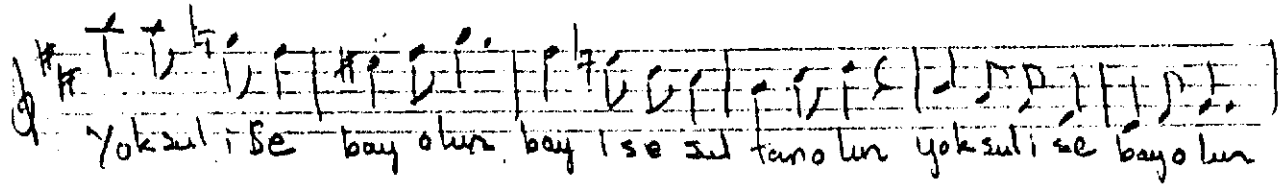
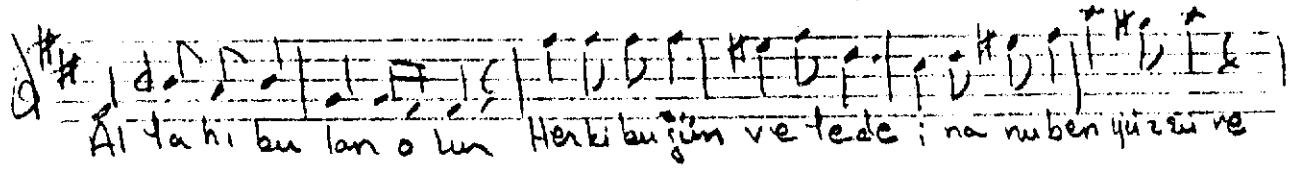
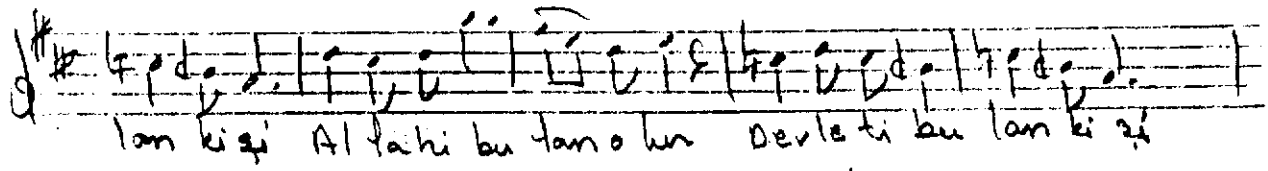
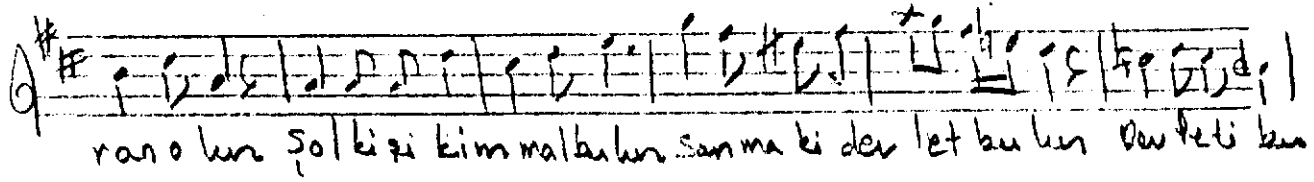
3. Yürük Semâi (d=120)

Ey ki he zan a fe rin bu ni ce sul tan o lür kü lü o lan

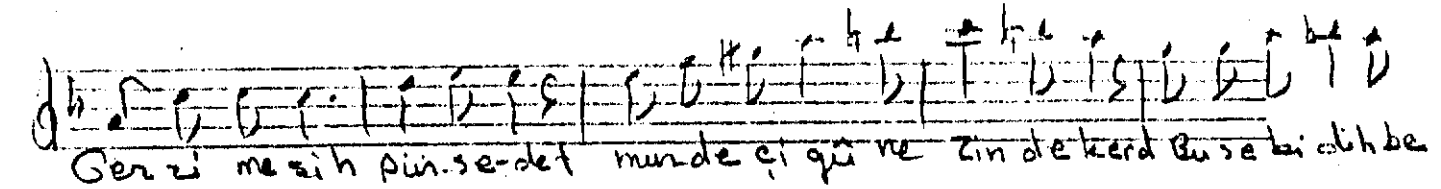
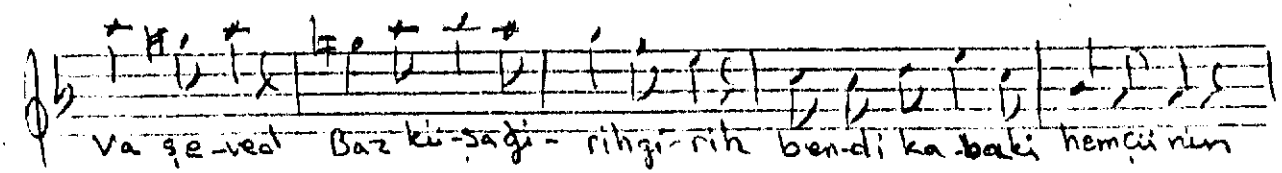
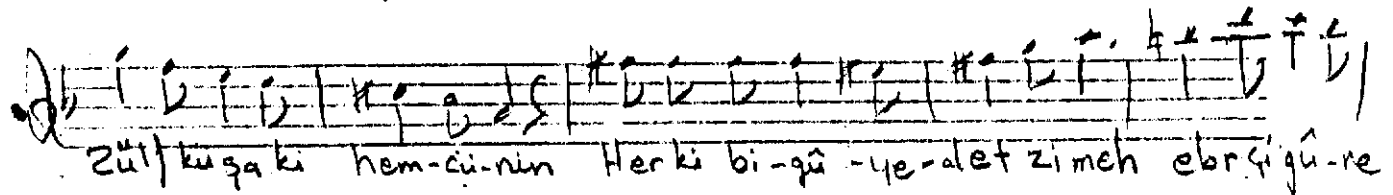
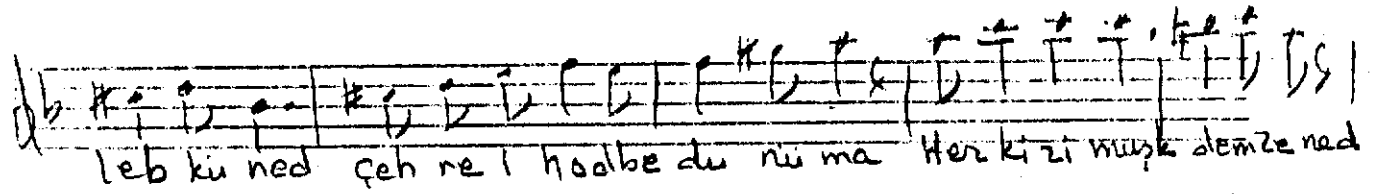
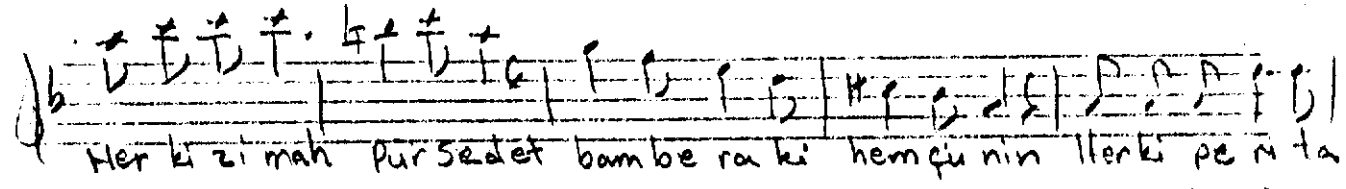
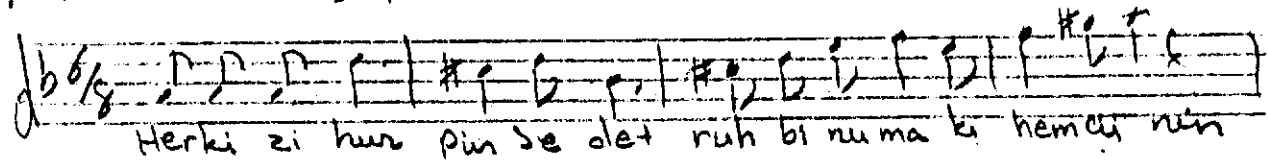
ki ş i ler hus re vü ka kan o lür kü lü o lan ki ş i ler hus re vü ka

kan o lür sen ma lü na tap ma gıl kö k ve sa ray yap ma gıl ol ça lı ş up

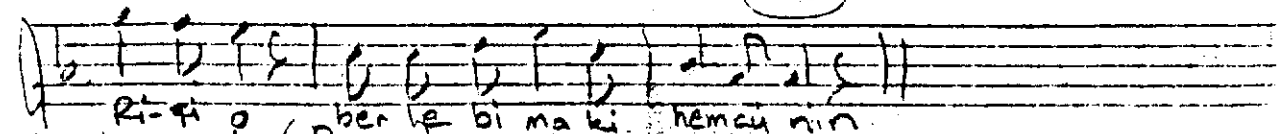
yap dı ğ ın son u cu vi ran o lür ol ça lı ş up yap dı ğ ın son u cu vi



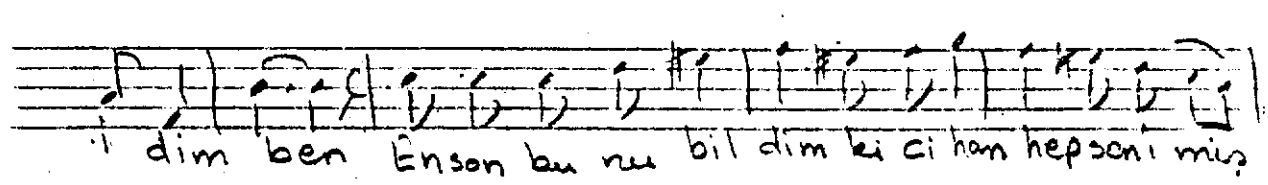
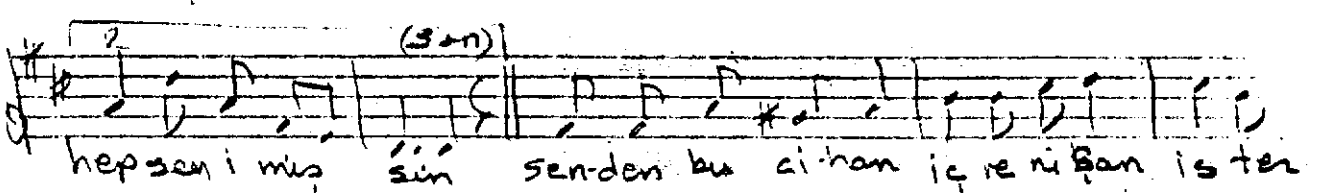
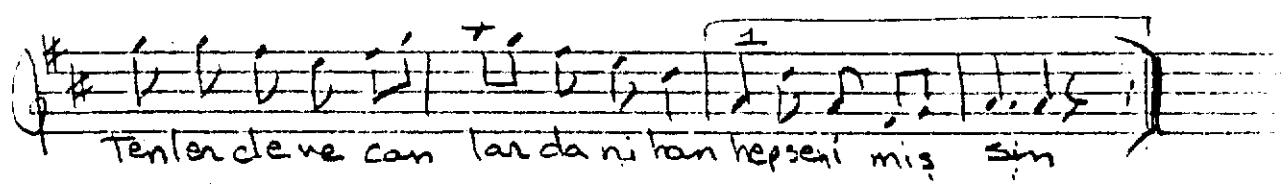
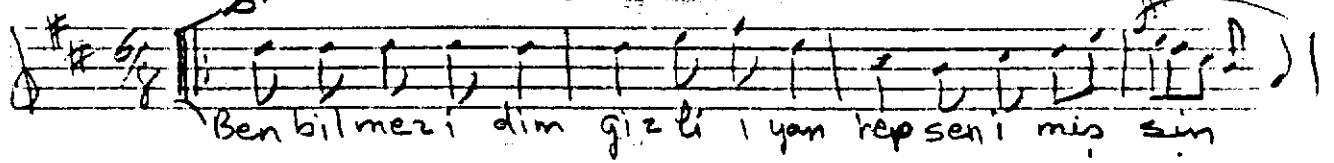
3. Yürük Semai 120



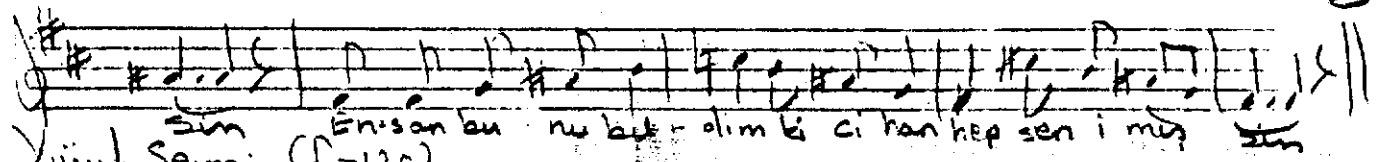
3.



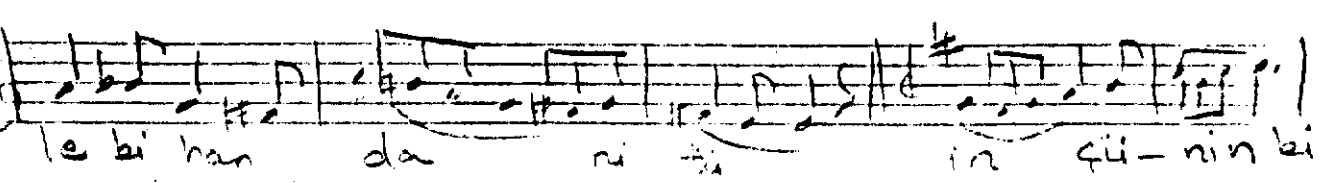
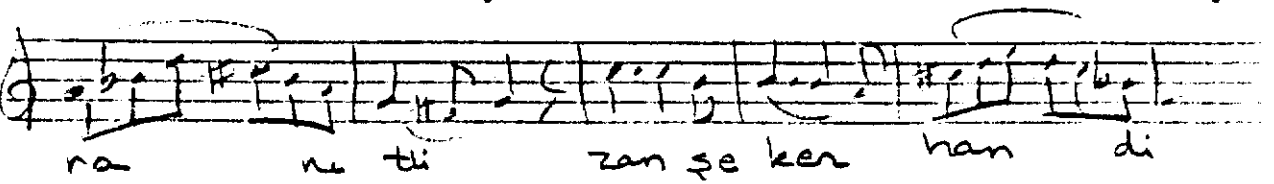
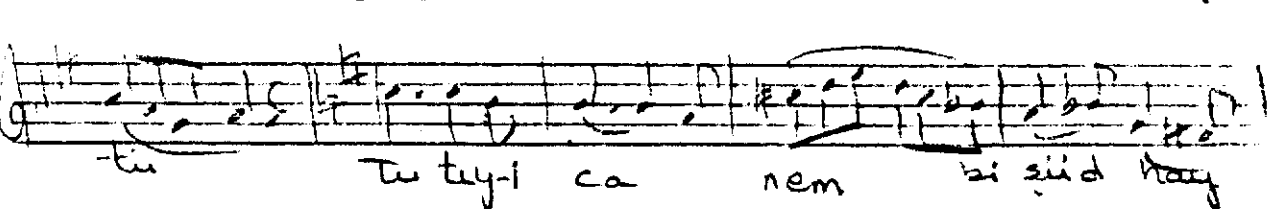
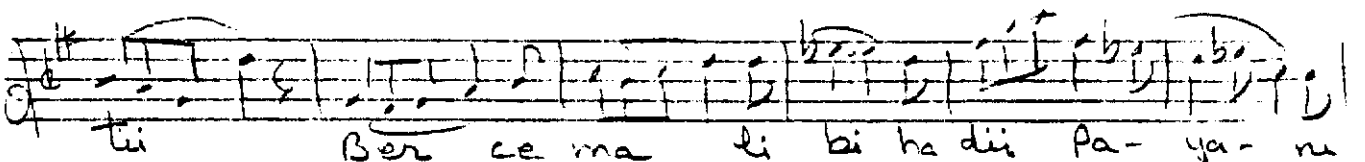
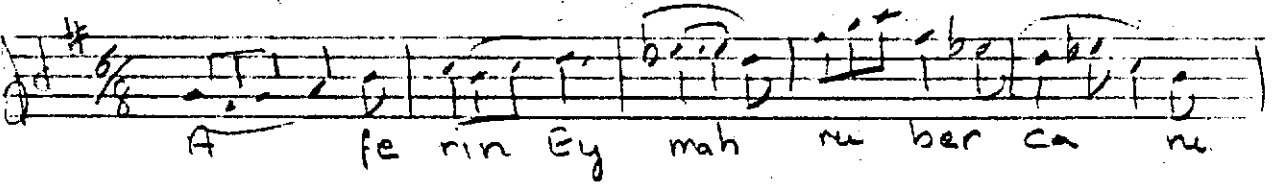
Yürük Semai (♩=120)



3.



Yürük Semai (♩=120)



tu im ga - ji me bas.

[4. Selâm] Evler. (2-92)

me - ni ven der di - li can

mi men zin de ze

Vem Yek can Gi se veol

Sān gē qīng niú

Sān gē qīng niú

Handwritten musical notation for the melody. The notes are written on a five-line staff. The lyrics 'me na zeh rest ne nan' are written below the staff, aligned with the notes. The melody consists of a series of eighth and sixteenth notes, with some rests indicated by the word 'rest'.

Hem a be me ni Hem na ne

Handwritten musical notation for the melody "me ni zehrez ti me ra". The notation is on a single staff with a treble clef and a key signature of one flat (B-flat). The melody consists of the following notes: me (G4), ni (A4), zehrez (B-flat4), ti (A4), me (G4), and ra (F4). The notes are connected by a series of slurs and beams, indicating a continuous melodic line. The lyrics are written below the staff.

